

Importing and inspecting data from LandIS MapShop with the online Mapshaper tool

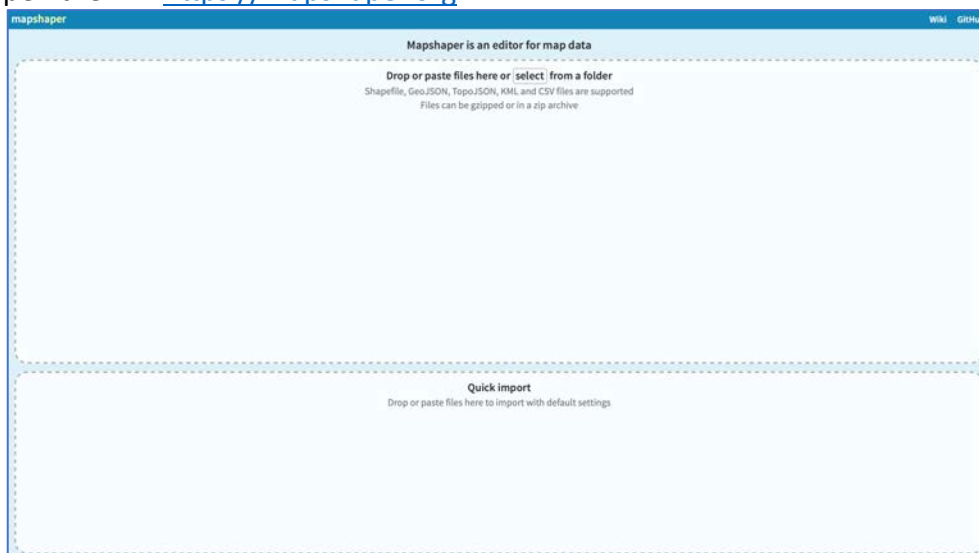
Instructions for accessing and exporting data sourced from the LandIS Mapshop

Download the data from Mapshop. This tutorial uses the sample data provided for the hydrology of soils dataset, HOST. Along with Cranfield's licence file, digital data can be accessed from Mapshop in two popular 'geographical information management' (GIS) formats – 'shp' is the ESRI Shapefile, and 'tab' is MapInfo Table format. Here we use the shp file. Make sure all the files are located in a folder together – the following files are in the sample dataset for example:

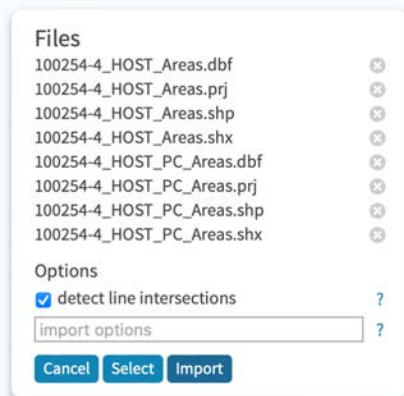
100254-4_HOST_Areas.dbf	100254-4_HOST_PC_Areas.dbf
100254-4_HOST_Areas.prj	100254-4_HOST_PC_Areas.prj
100254-4_HOST_Areas.shp	100254-4_HOST_PC_Areas.shp
100254-4_HOST_Areas.shx	100254-4_HOST_PC_Areas.shx

If you are a GIS user, you will be able to directly open and manipulate the data with GIS software, e.g., ArcGIS or QGIS. If you are not a GIS user, there is a handy online tool you can use to access the data:

Next, open the link <https://mapshaper.org>



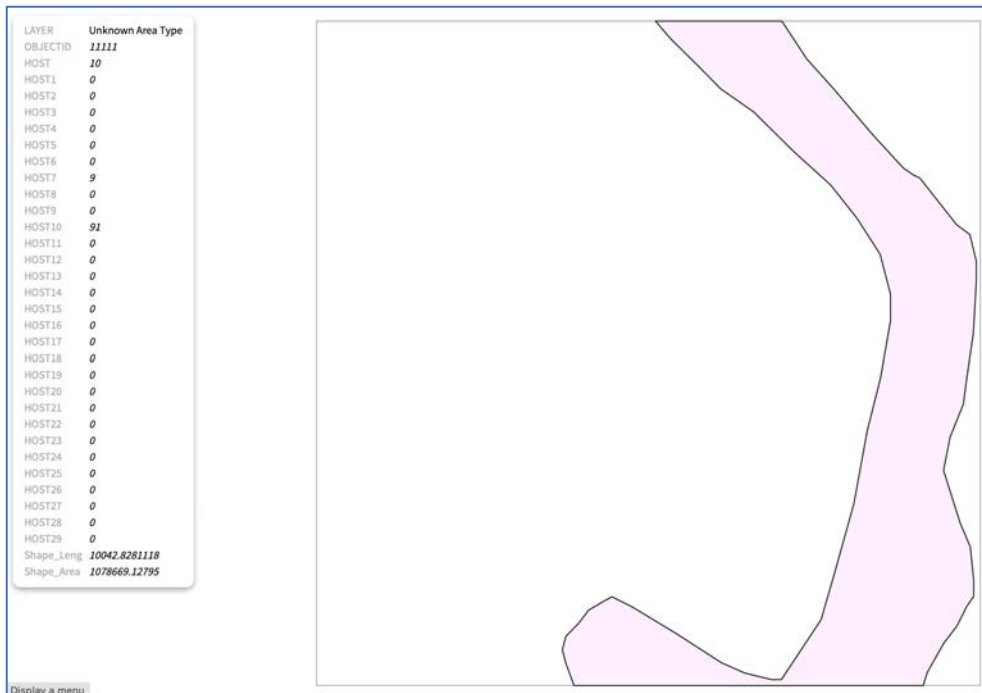
From the file explorer, 'drag and drop' all these files into the top box. Select 'Import'



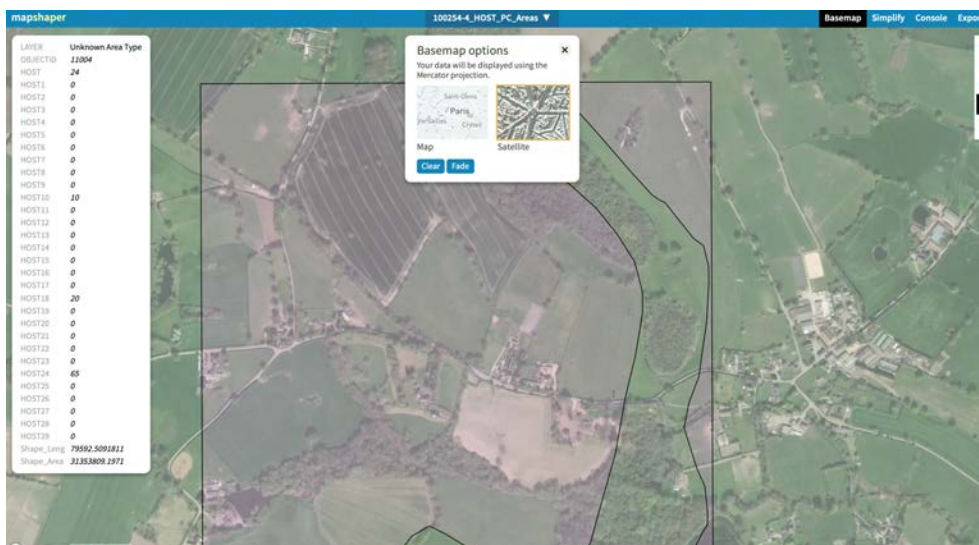
The data are imported and the viewing map window shows the data.



You can now select the 'arrow' cursor from the right side and move the mouse over a feature to inspect it. The properties pop up on the left side.



Note you can add a basemap to the data and view it onscreen – here showing the satellite data view:

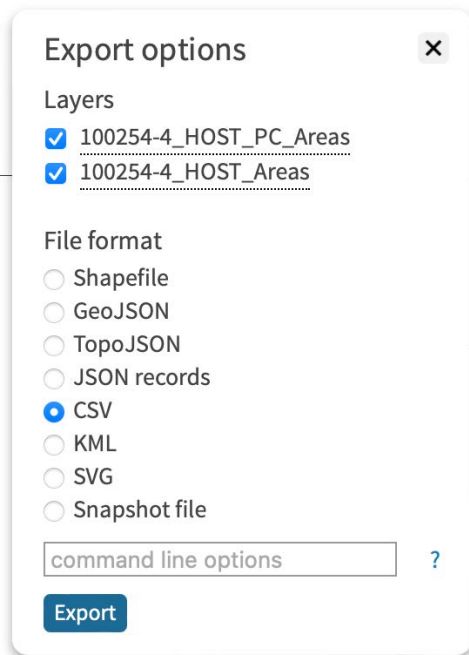


This can be screen grabbed to create an image say for a report.

To **export** the data, select the 'Export' menu from the top right



You can select different data formats to export to – for example CSV (a Comma Separated Values file), which will load into Excel.



The data is zipped up and can be downloaded, then opened into a text editor or spreadsheet

```

1 LAYER,OBJECTID,HOST,HOST1,HOST2,HOST3,HOST4,HOST5,HOST6,HOST7,HOST8,HOST9,HOST10,HOST11,HI
2 Unknown Area Type,11004,24,0,0,0,0,0,0,0,0,0,0,0,0,10,0,0,0,0,0,0,0,0,0,20,0,0,0,0,0,65,0,0,0,0,0,7!
3 Unknown Area Type,11111,10,0,0,0,0,0,0,0,9,0,0,91,0,0,0,0,0,0,0,0,0,0,0,0,0,0,0,0,0,0,0,0,0,0,0,100

```

Note the original Mapshop download also contains a manual to help interpret the data values.

www.landis.org.uk

v1.0